



STATE OF NORTH CAROLINA  
DEPARTMENT OF TRANSPORTATION

PAT MCCRORY  
GOVERNOR

ANTHONY J. TATA  
SECRETARY

January 2, 2015

CONTRACT: 11448912  
WBS ELEMENT: 2.100720, 2.107420  
COUNTY: Beaufort, Pitt  
ROUTE: Various  
DESCRIPTION: On-call Guardrail/Guiderail Repair and/or Installation

**Addendum Number 1 / Response to Request for Information**

TO: Prospective Bidders

Please note the following revision to the contract proposal for the above-referenced project.

- The deletion of the following line items  
12 GUARDRAIL ANCHOR UNITS, TYPE XI (APPROACH)  
13 GUARDRAIL ANCHOR UNITS, TYPE XIII (TRAILING END)  
14 GUARDRAIL ANCHOR UNITS, TYPE VI (MOD)
- Please use the attached updated bid form.
- A drawing for the GUARDRAIL ANCHOR UNIT, TYPE III MODIFIED has been attached for your reference.

The following was asked by a potential bidder, "on Item 24 – REPLACE CONCRETE ANCHOR FOR CABLE GUIDERAIL. Is the Department looking to replace the complete concrete piling/anchor unit as shown on Sheet 10 of 12 Section 865.01?" The response to this question is yes, the anchor is to be installed as shown in the standard drawings.

Sincerely,

A handwritten signature in black ink, appearing to read "Sarah Lentine".

Sarah Lentine  
Division Contract Officer

Attachment

cc: Mr. Preston Hunter, PE

# North Carolina Department of Transportation

## BID FORM

**CONTRACT:** 11448912  
**WBS ELEMENTS:** 2.100720, 2.107420  
**COUNTIES:** Beaufort, Pitt  
**DESCRIPTION:** Guardrail/Guiderail Repair and/or Installation

**BID OPENING: January 14, 2015**

ITEM	SECT	DESCRIPTION	QTY	UNIT	UNIT PRICE	AMOUNT BID
1	SP	EMERGENCY CALL BACK (MOBILIZATION)	25	EA		
2	SP	IMPACT ATTENUATOR UNIT, TYPE 350	1	EA		
3	862	STEEL BEAM GUARDRAIL (WITH STEEL POSTS)	1000	LF		
4	862	STEEL BEAM GUARDRAIL (WITH WOODEN POSTS)	125	LF		
5	862	STEEL BEAM GUARDRAIL, SHOP CURVED	100	LF		
6	862	STEEL BEAM GUARDRAIL (RAIL ONLY)	1000	LF		
7	862	TERMINAL END SECTION	1	EA		
8	862	TYPICAL END SHOE	1	EA		
9	862	W-TR STEEL BM GUARDRAIL TRANSITION SECTION	1	EA		
10	862	ADDITIONAL GUARDRAIL POSTS (STEEL)	50	EA		
11	862	ADDITIONAL GUARDRAIL POSTS (WOOD)	10	EA		
12	862	GUARDRAIL ANCHOR UNITS, TYPE AT-1	1	EA		
13	862	GUARDRAIL ANCHOR UNITS, TYPE CAT-1	1	EA		
14	SP	GUARDRAIL ANCHOR UNIT, TYPE 350	15	EA		
15	SP	GUARDRAIL ANCHOR UNIT, TYPE M-350	5	EA		
16	862	BUFFERED END SECTION FOR AT-1, CAT-1	1	EA		
17	SP	END SECTION ASSEMBLY ONLY FOR TYPE 350	1	EA		
18	862	M-350 FLARE SECTION	1	EA		
19	862	TYPE III GUARDRAIL BRIDGE ANCHOR	1	EA		
20	862	TYPE III MOD RAIL-RETRO FIT	1	EA		
21	SP	REPLACE CONCRETE ANCHOR FOR CABLE GUIDERAIL	1	EA		
22	SP	RESET CONCRETE ANCHOR FOR CABLE GUIDERAIL	1	EA		
23	SP	RESET CABLE GUIDERAIL POST	10	EA		
24	SP	CABLE GUIDERAIL POSTS	500	EA		
25	SP	CABLE GUIDERAIL ANCHOR POSTS	5	EA		
26	SP	CABLE GUIDERAIL CABLE POST HOOKS	2500	EA		
27	SP	CABLE GUIDERAIL - RETENSION	20	EA		
28	SP	CABLE GUIDERAIL - SPLICE	5	EA		

29	SP	CABLE GUIDERAIL SPRING CABLE END ASSEMBLY	1	EA		
30	SP	STEEL TURNBUCKLE CABLE END ASSEMBLY	1	EA		
31	SP	TRAFFIC CONTROL (FULL LANE CLOSURE)	40	EA		
32	SP	TRAFFIC CONTROL (SHOULDER CLOSURES)	100	EA		
33	862	GUARDRAIL ANCHOR TYPE B-77	1	EA		
34	862	GUARDRAIL ANCHOR TYPE B-83	1	EA		
35	SP	DRILLING AND HARDWARE FOR ANCHOR UNIT	1	EA		

THE CONTRACTOR SHALL NOTE THAT THE CONTRACT QUANTITIES PROVIDED ARE USED SOLELY FOR DETERMINING THE LOWEST RESPONSIBLE BIDDER. NO MINIMUM AMOUNT OF WORK IS GUARANTEED UNDER THIS CONTRACT.

***TOTAL BID FOR PROJECT:*** \_\_\_\_\_

CONTRACTOR \_\_\_\_\_

ADDRESS \_\_\_\_\_  
 \_\_\_\_\_

Federal Identification Number \_\_\_\_\_ Contractors License Number \_\_\_\_\_

Authorized Agent \_\_\_\_\_ Title \_\_\_\_\_

Signature \_\_\_\_\_ Date \_\_\_\_\_

Witness \_\_\_\_\_ Title \_\_\_\_\_

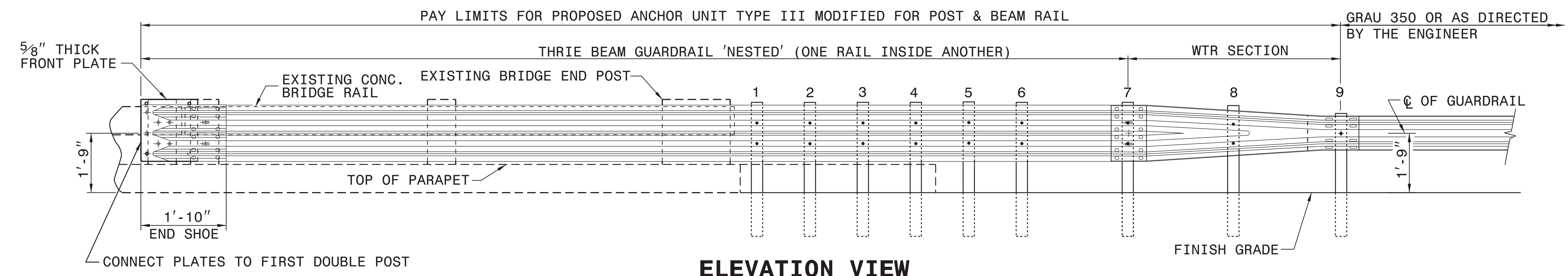
Signature \_\_\_\_\_ Date \_\_\_\_\_

**THIS SECTION TO BE COMPLETED BY NC DEPARTMENT OF TRANSPORTATION**

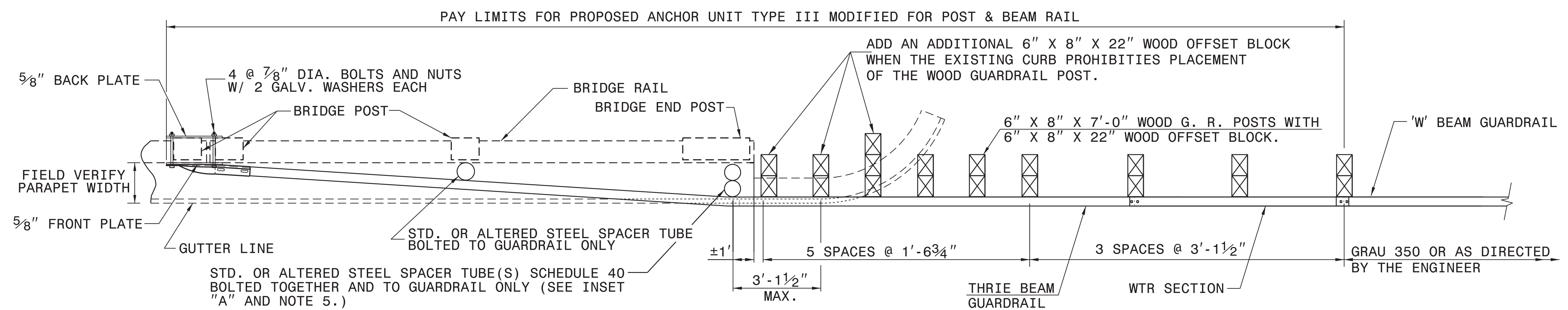
*This bid has been reviewed in accordance with Article 103-1 of the Standard Specifications for Roads and Structures 2006.*

*Reviewed by NCDOT* \_\_\_\_\_ *Date* \_\_\_\_\_  
*Contract Officer*

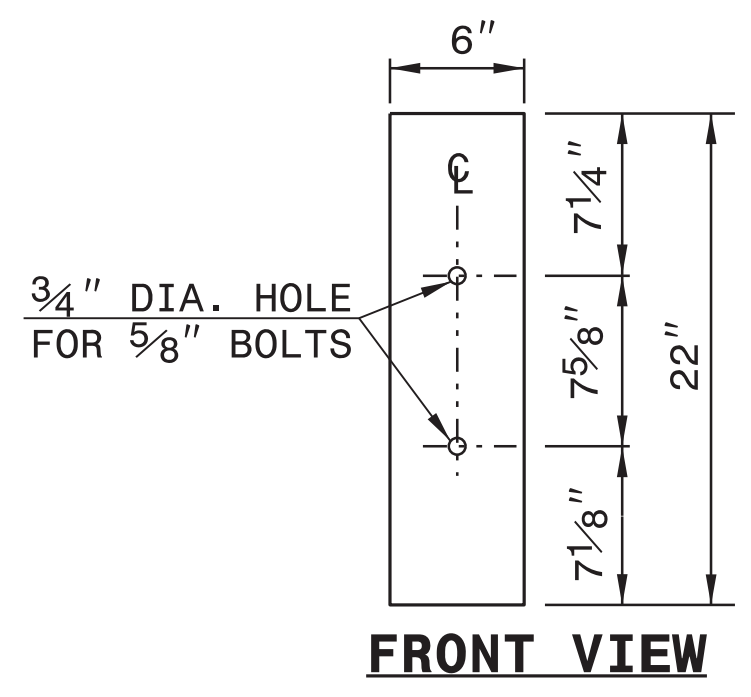
*Accepted by NCDOT* \_\_\_\_\_ *Date* \_\_\_\_\_  
*Division Engineer*



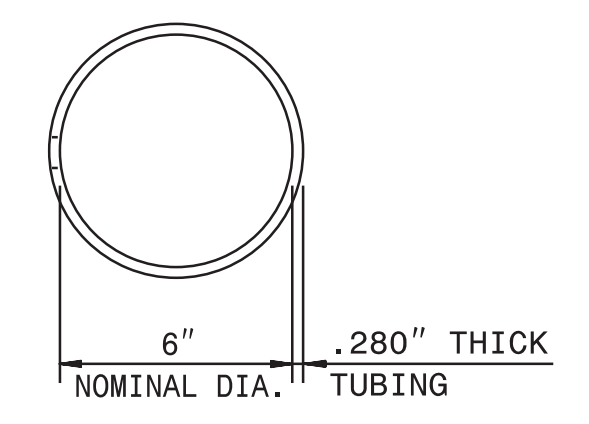
**ELEVATION VIEW**



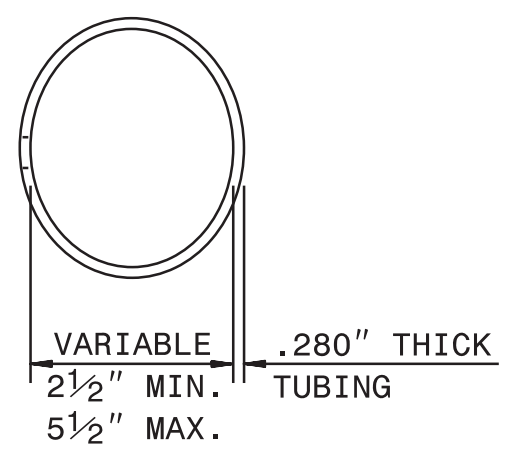
**PLAN VIEW**



**FRONT VIEW**

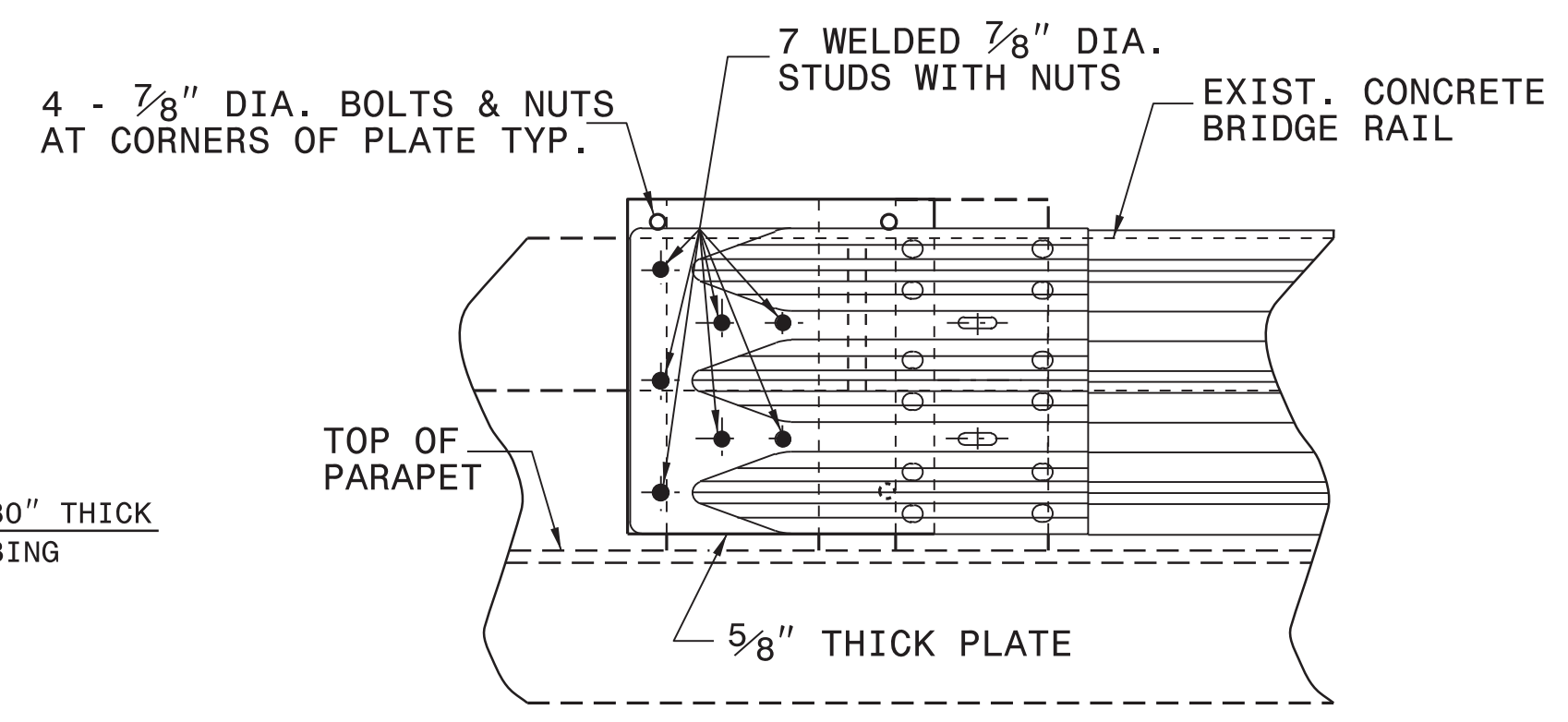


**PLAN VIEW**

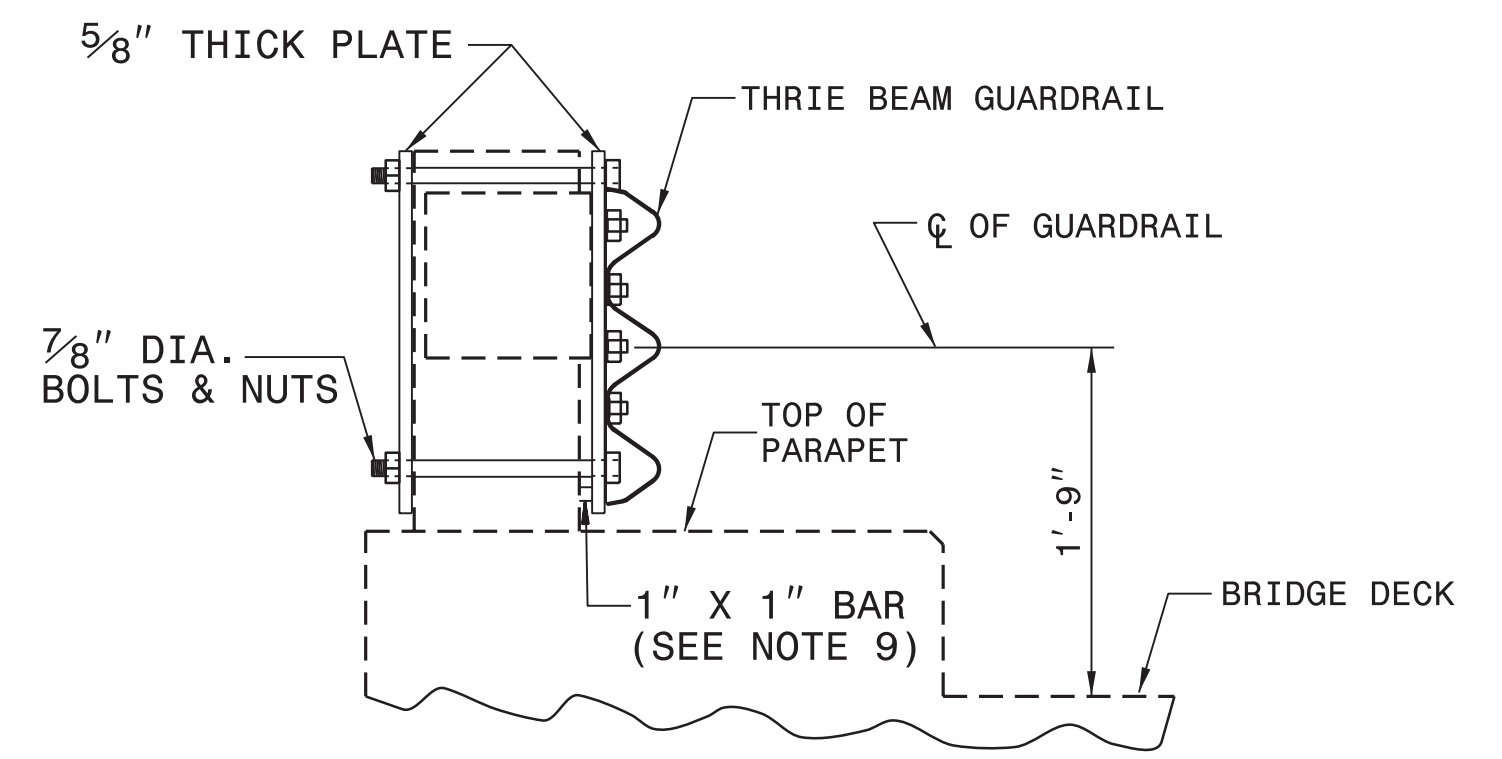


**PLAN VIEW  
INSET "A"**

**STEEL SPACER TUBE**



**ELEVATION VIEW**

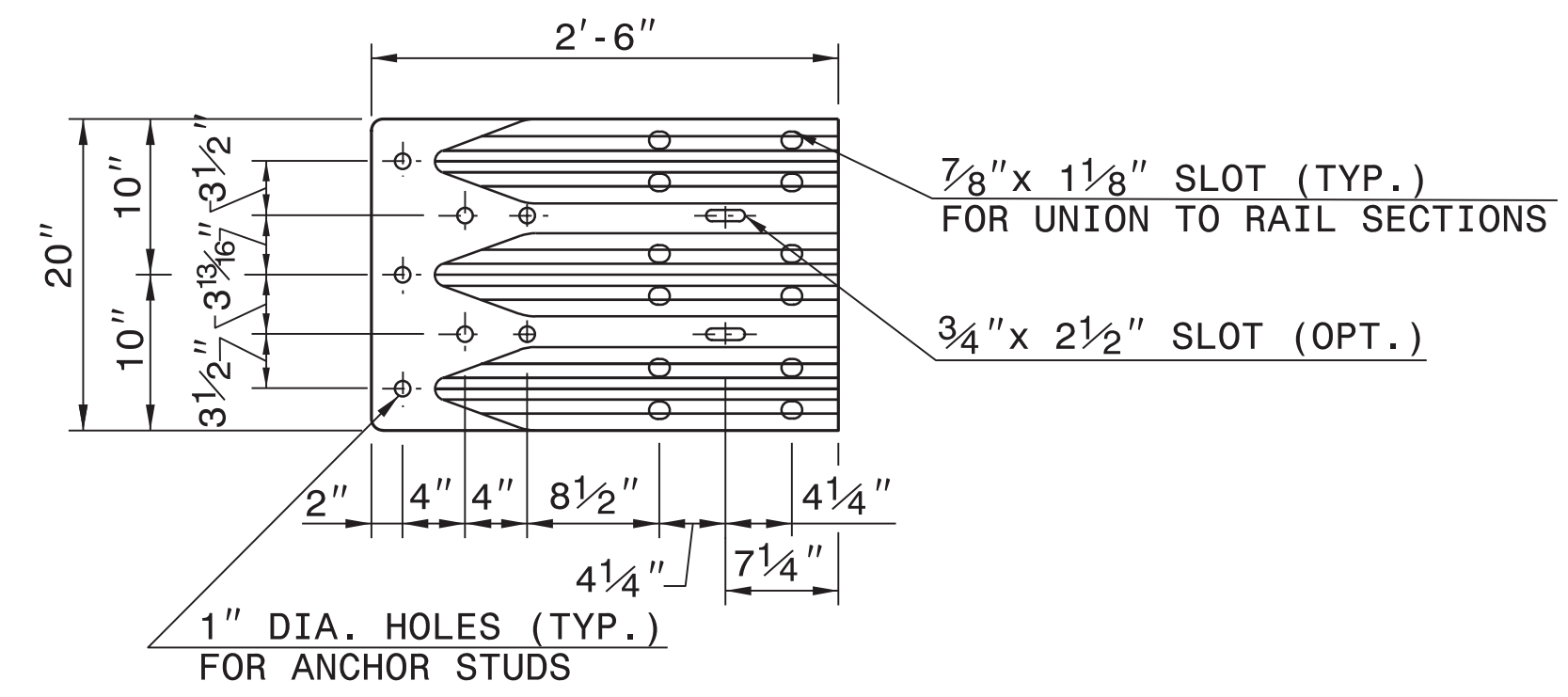


**SECTION VIEW**

**GUARDRAIL ATTACHMENT  
TO BRIDGE POST**

**GENERAL NOTES:**

1. USE NUTS, BOLTS, AND WASHERS CONFORMING TO THE REQUIREMENTS OF A.S.T.M. A-307 AND GALVANIZED IN ACCORDANCE WITH SECTION 1076 OF STAND. SPECS.
2. TAP NUTS FOR THE 7/8" DIA. STUDS AND BOLTS AFTER GALVANIZING SEE A.S.T.M. A-563.
3. USE PLATES AND TUBES CONFORMING TO THE REQUIREMENTS OF A.S.T.M. A-36 AND GALVANIZED AFTER FABRICATION IN ACCORDANCE WITH SECTION 1076 OF STAND. SPECS.
4. ADDITIONAL FIELD HOLES MAY BE DRILLED IN STEEL RAIL AS DIRECTED BY THE ENGINEER.
5. INSTALL FACE OF GUARDRAIL AS NEAR AS POSSIBLE TO PLUMB WITH THE PARAPET FACE AT BRIDGE END POST SPACER TUBE LOCATION BY USING STANDARD OR ALTERED SPACER TUBES OR A COMBINATION THEREOF OR AS DIRECTED BY THE ENGINEER. FOR VERY SMALL PARAPET WIDTHS, GUARDRAIL MAY BE INSTALLED AGAINST BRIDGE RAIL WITHOUT SPACER TUBES.
6. DO NOT DRILL BRIDGE RAIL IN ORDER TO INSTALL GUARDRAIL ANCHOR UNIT.
7. USE THIS DETAIL ONLY FOR BRIGES WITH POST AND BEAM TYPE RAIL.
8. ATTACH 1" X 1" BAR AND THREADED STUDS TO PLATE WITH 1/4" WELDS ALL AROUND.
9. 1" X 1" BAR MAY NOT BE NEEDED ON BRIDGE RAILS WHERE FACE OF RAIL DOES NOT PROJECT BEYOND FACE OF POST.
10. PROVIDE SHOP DRAWINGS OF THE PLATES TO THE ENGINEER FOR APPROVAL BEFORE FABRICATING THE PLATES.
11. LAP JOINTS IN THE DIRECTION OF TRAFFIC FLOW.
12. SEE ROADWAY STARDARD DRAWING 862.03 SHEET 1 FOR ADDITIONAL INFORMATION ON THE TYPE III ANCHOR UNIT



**END SHOE**

**CONTRACT STANDARDS  
AND DEVELOPMENT UNIT**  
Office 919-707-6950 FAX 919-250-4119

**GUARDRAIL ANCHOR UNIT  
TYPE III MODIFIED  
FOR POST & BEAM RAIL**

ORIGINAL BY: E.E. WARD DATE: 01-03  
 MODIFIED BY: E.E. WARD DATE: 02-04  
 CHECKED BY: DATE:  
 FILE SPEC.: \usr\details\stand\bp111 original.dgn